



# NCR NeighborhoodPOS

Your complete  
Retail  
solution



- Complete Global Solution
- Full-featured Application
- Wide Range of Payment Options
- Store and Restaurant Capabilities
- Superior Reporting and Data Management

## Single Source Technology Solution

A complete solution for specialty and general retail store owners, NCR NeighborhoodPOS includes hardware, software and services. NCR NeighborhoodPOS ensures all of your technology bases are covered today, and is designed to protect your investment by adapting with your changing business needs tomorrow. NCR NeighborhoodPOS operates in a multitude of languages and supports a wide range of configurations. Robust application features allow NCR NeighborhoodPOS to efficiently operate a variety of retail environments including hardware, specialty, drug, boutiques, general merchandise and many other formats.

## All the Retail Features You Need

Keep your focus on selling to your customers while the NCR NeighborhoodPOS touch screen or screen / keyboard interfaces ease the completion of the sale. The full range of UPC and EAN formats including the new RSS-14 bar codes are supported out of the box. Capabilities such as linked items, item-level sales restriction, and age audit are also standard.

## More than Credit and Debit

NCR NeighborhoodPOS includes a flexible payment interface to a variety of partner payment systems. Support for credit, debit, gift card, frequent shopper, in-house charge and hotel charge posting provide the payment options your business needs to thrive.

## Handling Retail and Food Service

In addition to supporting general retail environments, NCR NeighborhoodPOS provides superior table service and quick service restaurant support. A single system can support multiple POS interfaces and transaction types all consolidated into one financial view of your operation.



# NCR NeighborhoodPOS

- PC Backoffice:
  - Windows 2000 Pro
  - Windows XP Pro

## Communications

- Ethernet 10/100 Mb within store cluster
- Dial-up or WAN to store clusters

## Software Components

- Flexible POS touch or CRT/keyboard application
- Payments subsystem and external interface
- Inventory application
- Managers WorkStation (MWS)
- Corporate WorkStation (CWS)

## Configuration Options

- Small: single POS operation with the POS application
- Large: multiple POS in store with MWS at the store level, and CWS consolidating information at central

For more information, visit [www.ncr.com](http://www.ncr.com), call 866.431.7879, or email [retail.contactus@ncr.com](mailto:retail.contactus@ncr.com).

## Store and Chain-wide Management

Enhanced data consolidation and reporting are provided via the optional Managers WorkStation (MWS) in the store and the Corporate WorkStation (CWS) at chain headquarters. These tools provide store and chain-wide data consolidation, management, reporting and parameterization.

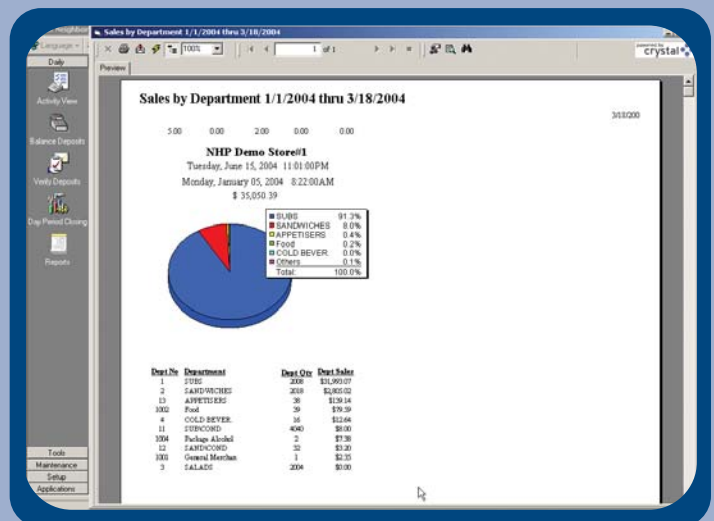
## Specifications

### Hardware

- Touch: NCR RealPOS 70 or 20
- Screen/Keyboard: NCR RealPOS 80c or 30
- Printers:
  - Receipt
  - Combo/Slip
  - NCR and Epson models
- NCR RealScan family
- Cash drawer
- Scale: Weightronix 67xx, Mettler Toledo
- Payment: variety of MSR and payment terminal devices
- Telequip Transact coin changer

### Operating Systems

- POS:
  - Windows® XPe
  - Windows XP Pro



NCR continually improves products as new technologies and components become available. NCR, therefore, reserves the right to change specifications without prior notice.

All features, functions, and operations described herein may not be marketed by NCR in all parts of the world. Consult your NCR representative or NCR office for the latest information.

NCR RealPOS is either a registered trademark or trademark of NCR Corporation in the United States and/or other countries. All brand and product names appearing in this document are trademarks, registered trademarks, or service marks of their respective holders.