

## ▶▶ iNET Retail: Multi-Store Manager (MSM)

Retailers are turning towards IT solutions that help them to integrate and monitor key business processes using lower cost and user-friendly internet-based Web Services technologies. They want quick-to-deploy, easy-to-manage, cost-effective solutions that support their ever-changing and extremely competitive business environment.

The industry is actively beginning to embrace the web as a valid medium to securely exchange business transactions and support business processes. Web Services are transforming the Internet into a reliable and dependable business environment.

ISE Corporation is a leading software developer of real-time business collaboration products and solutions for the retail market. Through strategic business alliances with leading base-technology suppliers such as NCR, Microsoft and BR Data, ISE provides a collaborative Web Services-based platform and process-enhancing applications, allowing Retailers to work more efficiently both internally and with their trading partners and customers.

In today's environment, the alternatives for deploying an adaptive IT infrastructure are governed not by "technology trends" but by business initiatives, especially in a highly competitive and dynamic market such as yours. In fact, Retailers are faced with the following key challenges:

- Highly fragmented and heterogeneous IT environments
  - Hardware
  - Platforms
  - Software
  - Skill sets
- Tremendous amount of legacy-based data and applications
- Increased demand for supporting new and high ROI business requirements (Business Processes)
- Limited resources
- Enormous regulatory and compliance requirements
- Large competitive base

Valuable software solutions such as **ISE iNET Retail** must definitively take advantage of pre-existing enterprise applications, while easing the

development and deployment of new process-enhancing software components (i.e. composite-applications over a service-enabled infrastructure) that can have an immediate impact in your customer retention initiatives and ROI.

The business benefits to Retailers using ISE iNET Retail solutions are many --

- Extended life-cycle of enterprise and legacy applications
- Sharpened visibility of key business processes
- Improved business flexibility and agility
- Reduced IT complexity
- Faster time-to-market
- Real-time control of their complete business chain (Multiple stores in many locations)

And all of these benefits are provided on top of your existing retail IT infrastructure (e.g., ScanMaster, NCR ACS, IBM ACE, BR Data).

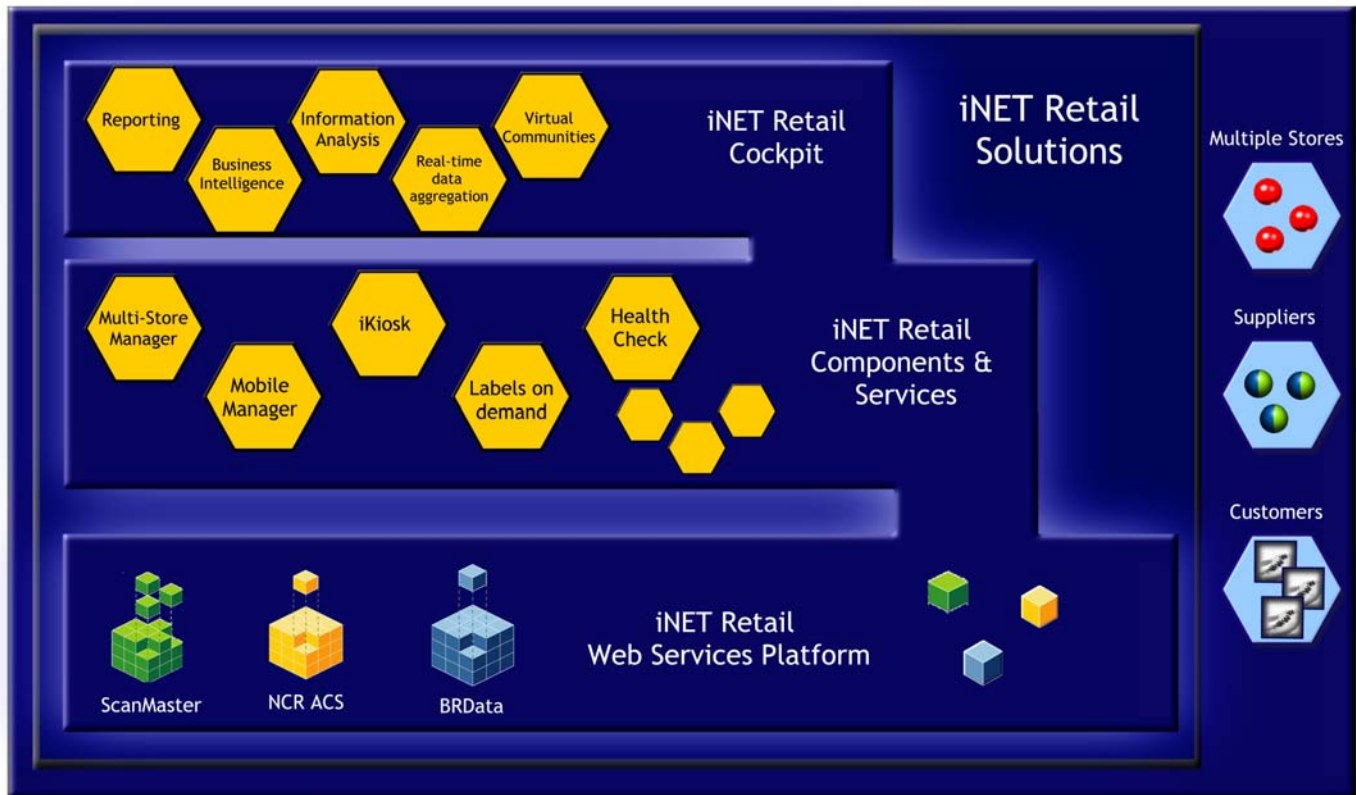
ISE iNET Retail solutions over-perform at extending the value and life-cycle of existing mission critical applications, while enabling Retailers to easily incorporate innovative solutions and state-of-the-art technology that will provide you with key differentiators in you market place. Under this scenario, applications and information become accessible as discrete and active elements in a network of internet-connected components, all tied together by inter or intra company-wide business processes and best practices.

### Evolving needs:

Improving your Business while lowering IT Total Cost of Ownership (TCO)

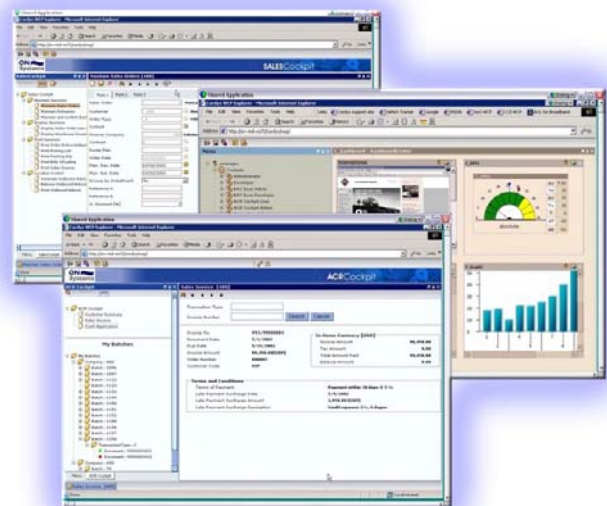


## ▶▶ iNET Retail: Multi-Store Manager (MSM)

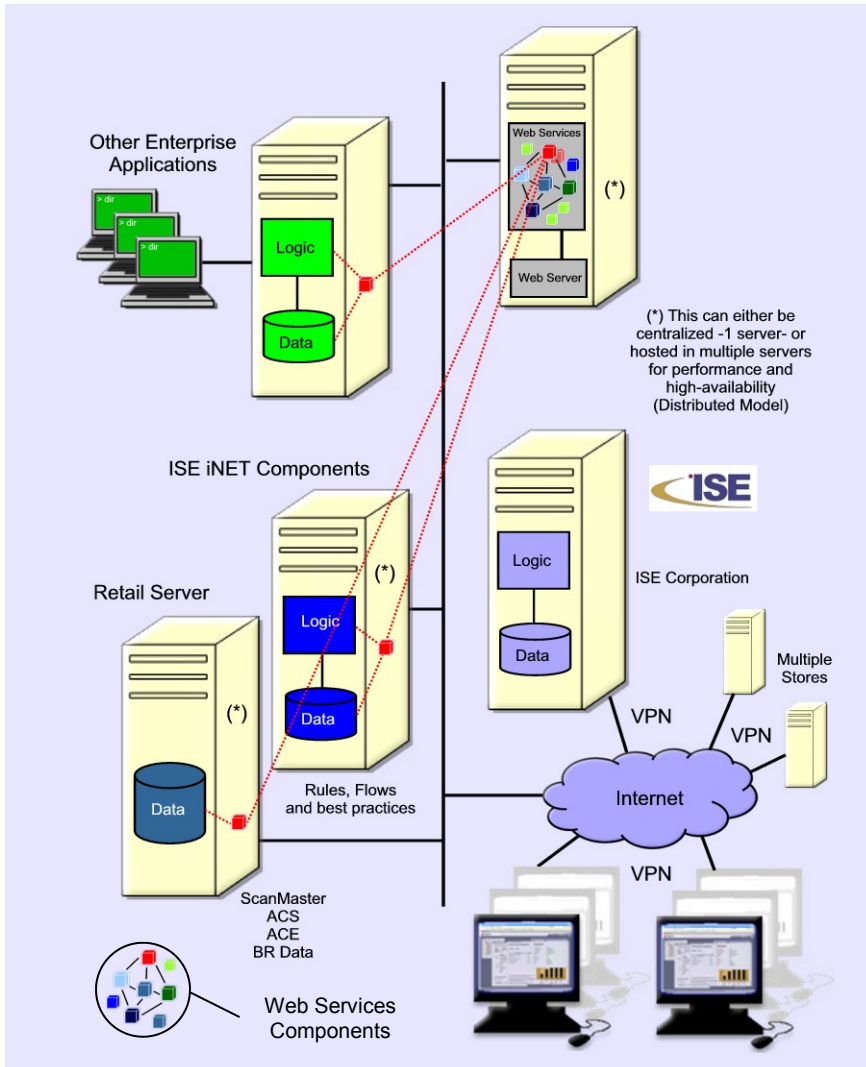


ISE iNET Retail Multi-Store Manager (MSM) provides a secure, easy to use and efficient environment for store managers and key personnel to be able to effectively manage and control:

- Batch creation for any in-network store
- Distribute the previously created batches to 1-single or any other store in your network
- Keep a copy of same batches in a historical area once successfully distributed to its desired destination
- View and print batches locally at the HOST side
- Print labels on-demand for any store
- Stage the batches at the store for the in-store personnel to be able to print the necessary labels
- Apply batches at any store
- Access any store and print financial reports and/or any type of analytical information that the store legacy system may provides
- Mechanism to perform scheduled backups of any key data repository for any in-network store
- Keep backed-up files from further re-installs or distribution
- Collect data to be exported to Microsoft Office products for further manipulation



## ▶▶ iNET Retail: Multi-Store Manager (MSM)



- Web Services-based platform that monitors, reports and manages a wide variety of financial transactions in real-time that involve your customer base
- Leverages existing IT infrastructure
- Easy-to-define and deploy: rules, flows, alerts, events, key performance indicators (KPIs), trends, analysis according to the particular needs and practices of your Institution and customer base
- Automatic updates and high-availability of key databases and process-repository
- User definitions according to roles, procedures, permissions, authority levels
- Comprehensive and detailed audit trail
- Extensive reporting and data aggregation capabilities (*Real-Time Retail Cockpit*)

ISE iNET Retail provides a solid foundation for Retailers to meet the demands of today's businesses while extending the life and value of existing relationships. Your focus should be on better serving customer needs while improving your bottom line.

***ISE iNET Retail its all about this...***

© 2005 iNET Retail Technologies Inc. All rights reserved. iNET Retail, iNET Retail Multi-Store Manager, iNET Retail MSM, iNET Retail logo are trademarks of iNET Retail Technologies Inc. All other trademarks mentioned herein maybe/are the trademarks or registered trademarks of their respective owners and should be noted as such.



**Over Achieve !**

### ISE Corporation

8925 NW, 26th ST  
Miami, FL 33172

(+1) 305-477-5617 [T]  
(+1) 305-591-4255 [F]

info@ISE-Corp.com

www.ISE-Corp.com